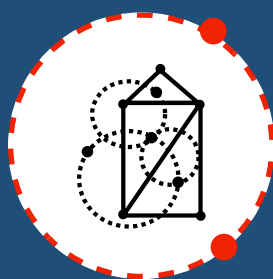


METROPOLITAN EDUCATIONAL RESEARCH CONSORTIUM

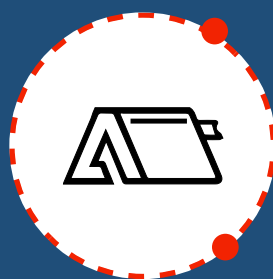
Chesterfield • Goochland • Hanover • Henrico • Petersburg • Richmond • VCU • Est. 1991



About



Projects



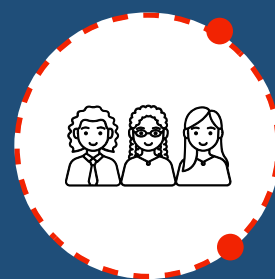
Podcast



Reports



Members



Conference

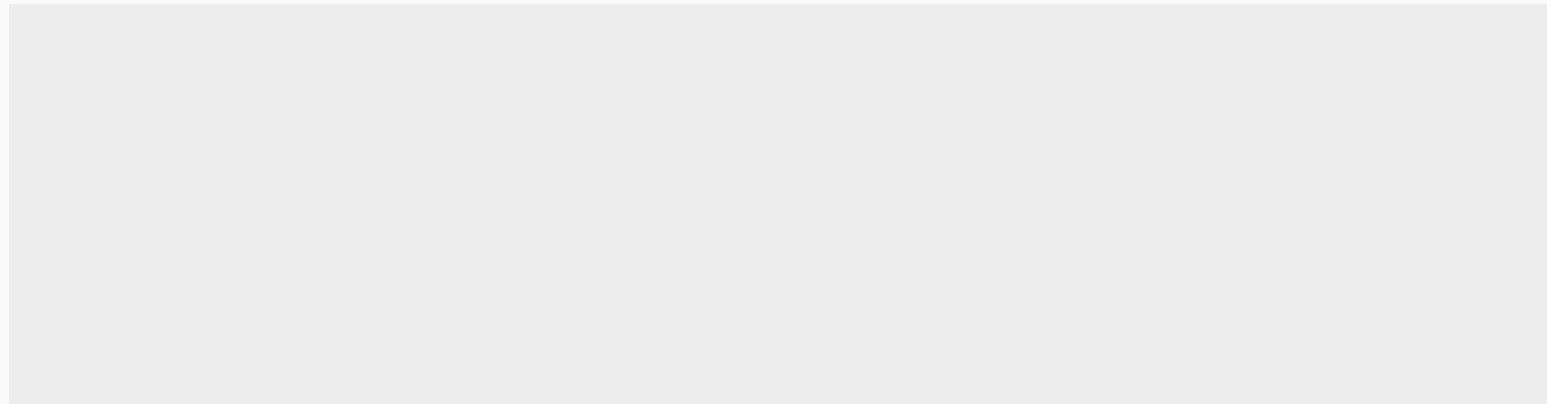
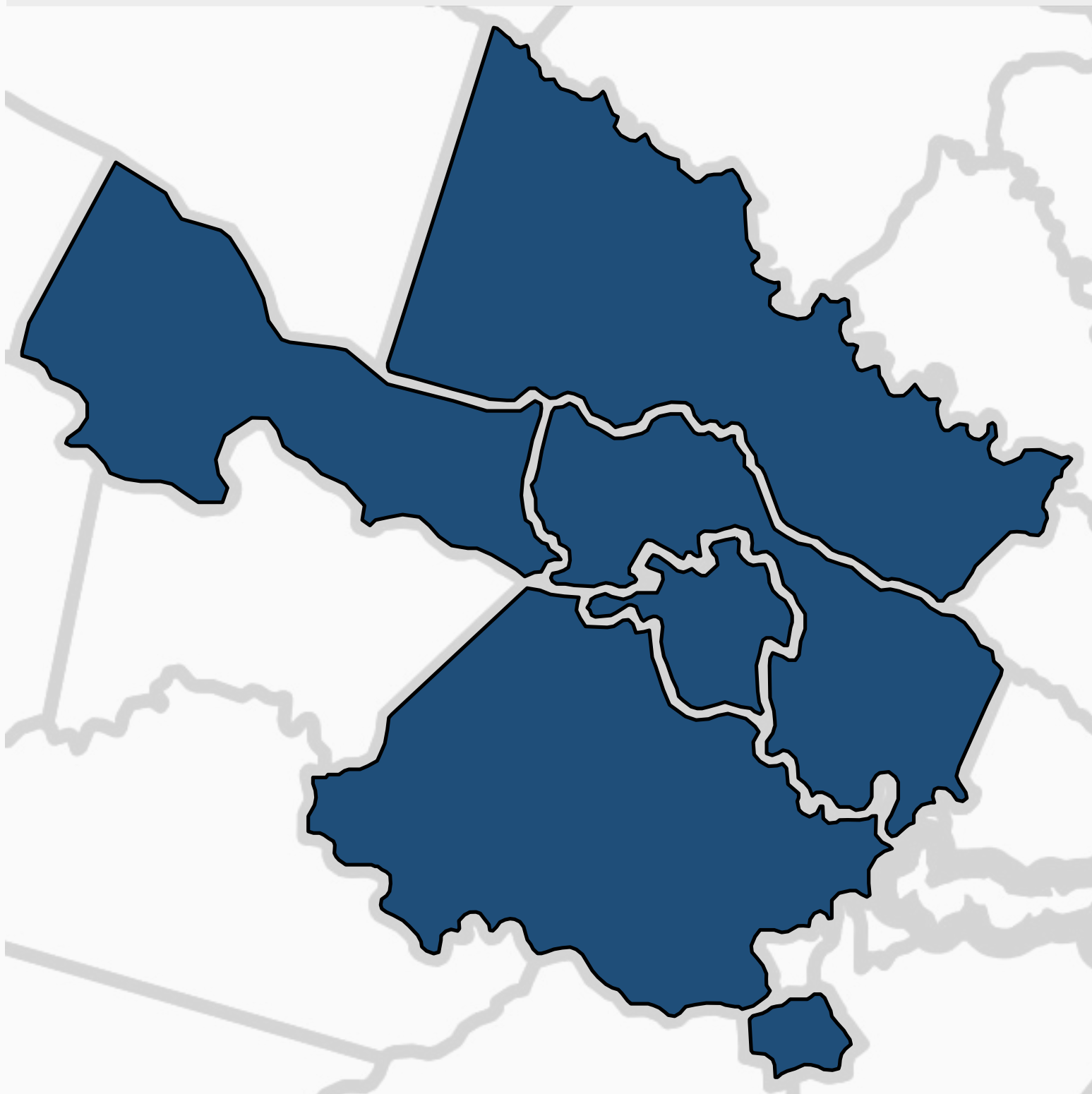
Member Schools

MERC’s collaborative effort involves the School of Education at Virginia Commonwealth University and eight Richmond area metropolitan school districts:

- [Chesterfield County Public Schools](#)
- [Goochland County Public Schools](#)
- [Hanover County Public Schools](#)
- [Henrico County Public Schools](#)
- [Petersburg City Public Schools](#)
- [Richmond City Public Schools](#)

Member school divisions benefit from an organizational structure that enhances their capacity for a strong program of research by directly addressing issues and problems they face. The University benefits by fulfilling a broad range of research, evaluation, and public service objectives. The partners jointly benefit by positioning themselves to compete for grants which require a school division/university partnership and for evaluation projects in the schools as well as VCU.

Select a Member Division



About Us

Mission

History

Members

Governance

Team

[Virginia Commonwealth University](#)
[School of Education](#)

MERC, Oliver Hall, 4th Floor
1015 W. Main St, Box 842020
Richmond, VA 23284-2020

[View icon credits](#)

Email: soemerc@vcu.edu

Updated August 14,2020

[Direct Edit](#)

[Privacy Policy](#)
[VCU Accessibility](#)
[Webmaster](#)